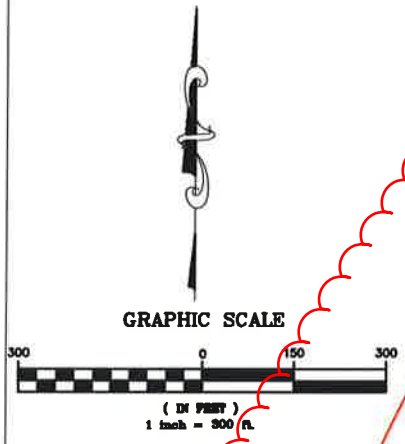


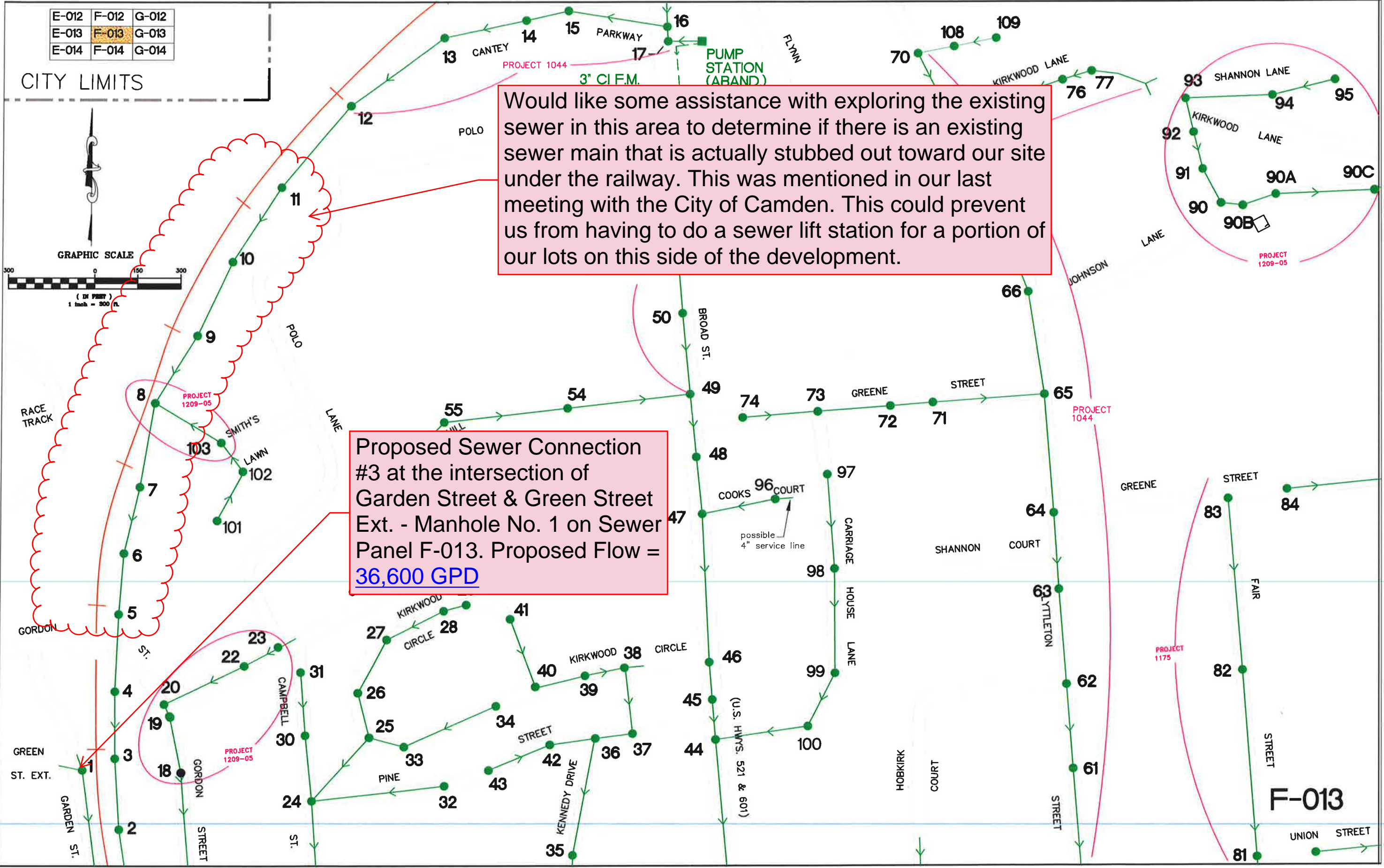
E-012	F-012	G-012
E-013	<b>F-013</b>	G-013
E-014	F-014	G-014

CITY LIMITS



Would like some assistance with exploring the existing sewer in this area to determine if there is an existing sewer main that is actually stubbed out toward our site under the railway. This was mentioned in our last meeting with the City of Camden. This could prevent us from having to do a sewer lift station for a portion of our lots on this side of the development.

Proposed Sewer Connection #3 at the intersection of Garden Street & Green Street Ext. - Manhole No. 1 on Sewer Panel F-013. Proposed Flow = **36,600 GPD**



K:\PMAST600\604-27\Drawings\dwg\2004-SEWER.dwg, Panels, 9/13/2010 10:39:13 AM, Adobe PDF-11x17.pc3, Tabloid, 1:1