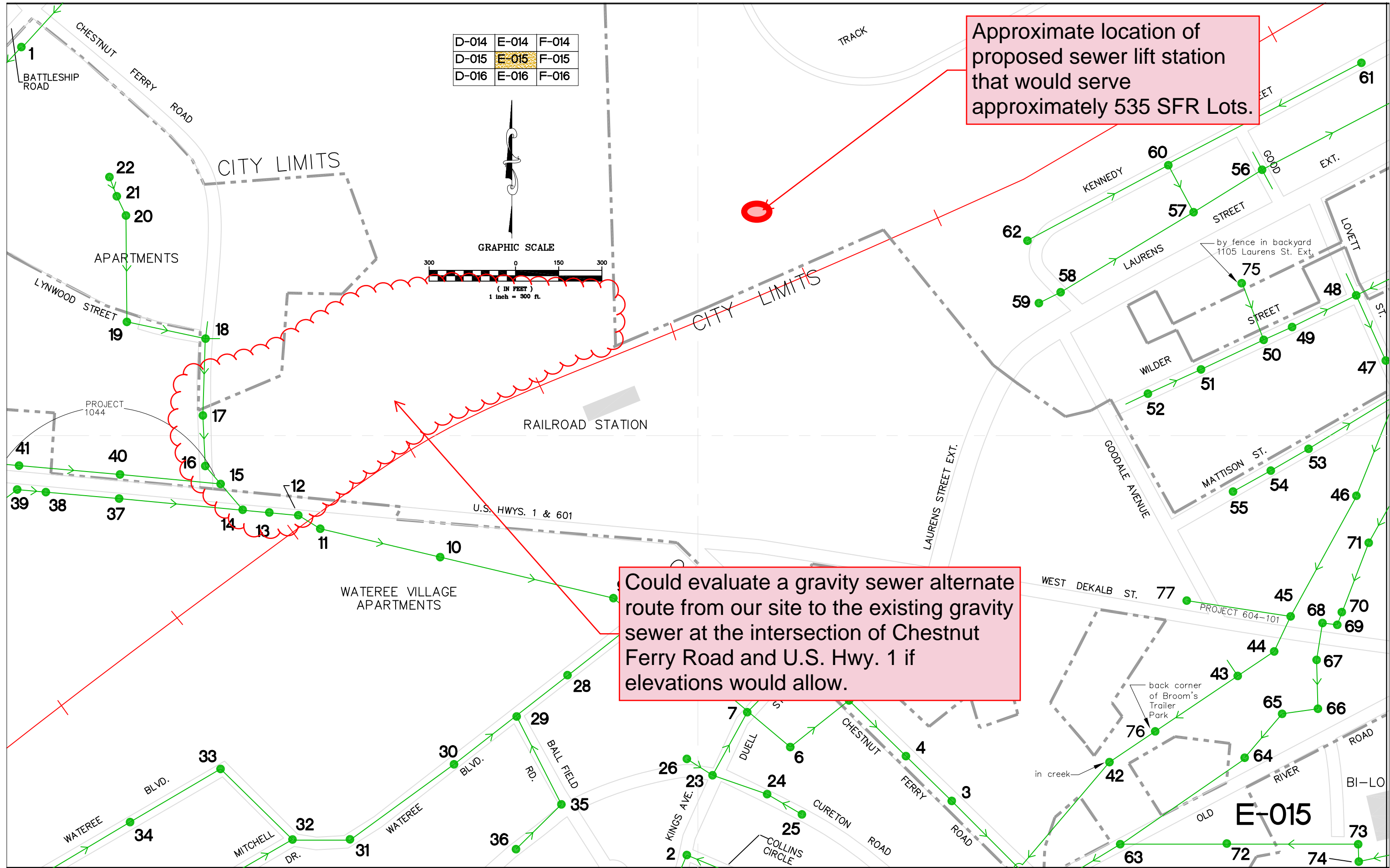


K:\PMAST600\604-27\Drawings\dwg\2004-SEWER.dwg, Panels, 9/13/2010 10:27:03 AM, Adobe PDF-11x17.pcb3, Tabloid, 1:1



D-014	E-014	F-014
D-015	E-015	F-015
D-016	E-016	F-016

Approximate location of proposed sewer lift station that would serve approximately 535 SFR Lots.

Could evaluate a gravity sewer alternate route from our site to the existing gravity sewer at the intersection of Chestnut Ferry Road and U.S. Hwy. 1 if elevations would allow.

